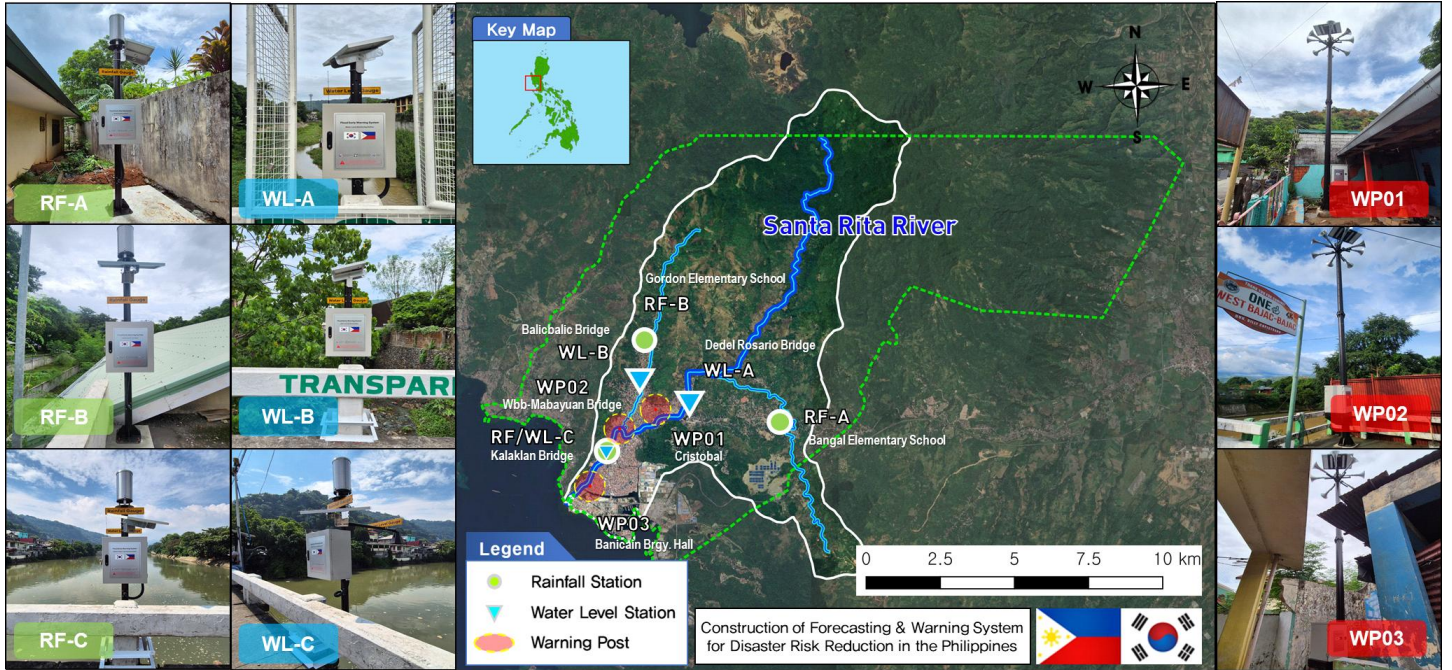


# Olongapo's River Basin in 2024



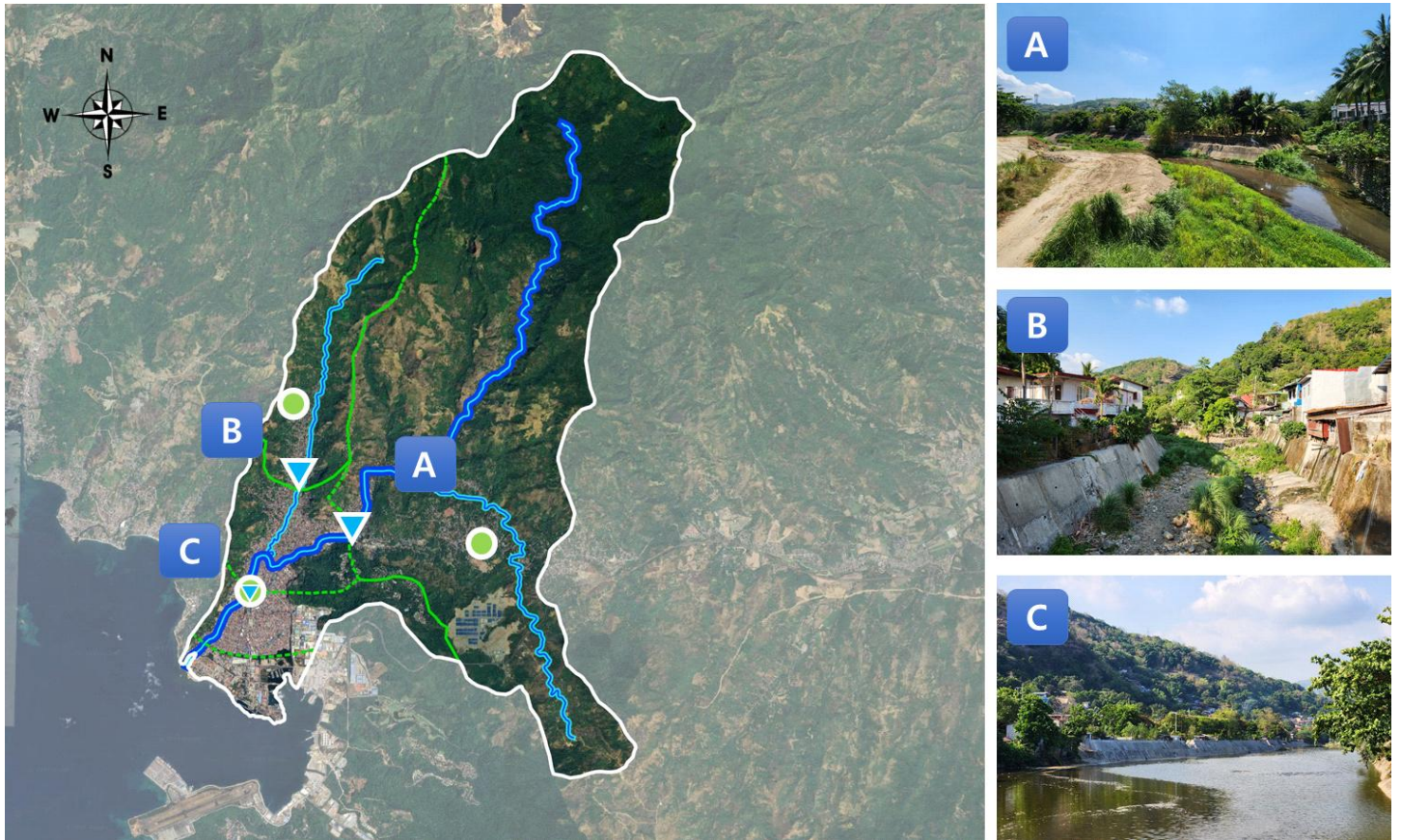
## ○ Characteristics of Watershed

Area (km <sup>2</sup> ) - A	Length (km) - L	Width (km) - A/L	Shape factor - A/L <sup>2</sup>
90.4	19.0	4.76	0.25

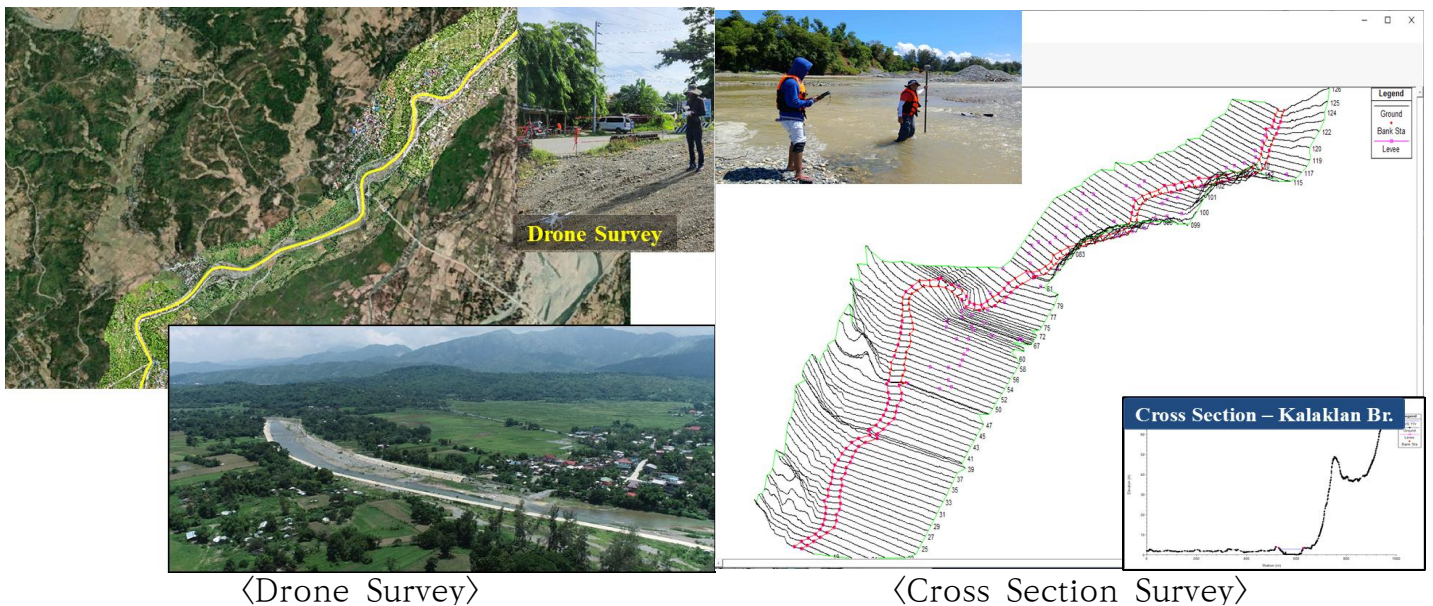
## ○ Location of Equipment

Basin	Division	Qty	Location	Latitude	Longitude
Santa Rita River	Warning Post	3	Cristobal	14°51'09.0"N	120°17'47.9"E
			Wbb-Mabayuan Bridge	14°50'46.2"N	120°17'05.1"E
			Banicain Brgy. Hall	14°49'44.3"N	120°16'32.3"E
	Rainfall Gauge	3	Bangal Elementary School	14°50'57.5"N	120°20'07.4"E
			Gordon Elementary School	14°52'20.2"N	120°17'32.3"E
			Kalaklan Bridge	14°50'22.7"N	120°16'53.7"E
	Water Level Gauge	3	Dedel Rosario Bridge	14°51'01.7"N	120°18'12.6"E
			Balicbalic Bridge	14°51'36.2"N	120°17'32.6"E
			Kalaklan Bridge	14°50'22.7"N	120°16'53.7"E

## ○ Characteristics of Sub Basins



## ○ River Survey



- Drone survey was performed to get the D.E.M(more than 5.5km<sup>2</sup>) of Olongapo city
- Cross section survey was performed to get the cross sections(165 sections) in the sector of 3 WL station of rivers in Olongapo city. (Total 8.0km)

► Cross section (WL-C Section)

