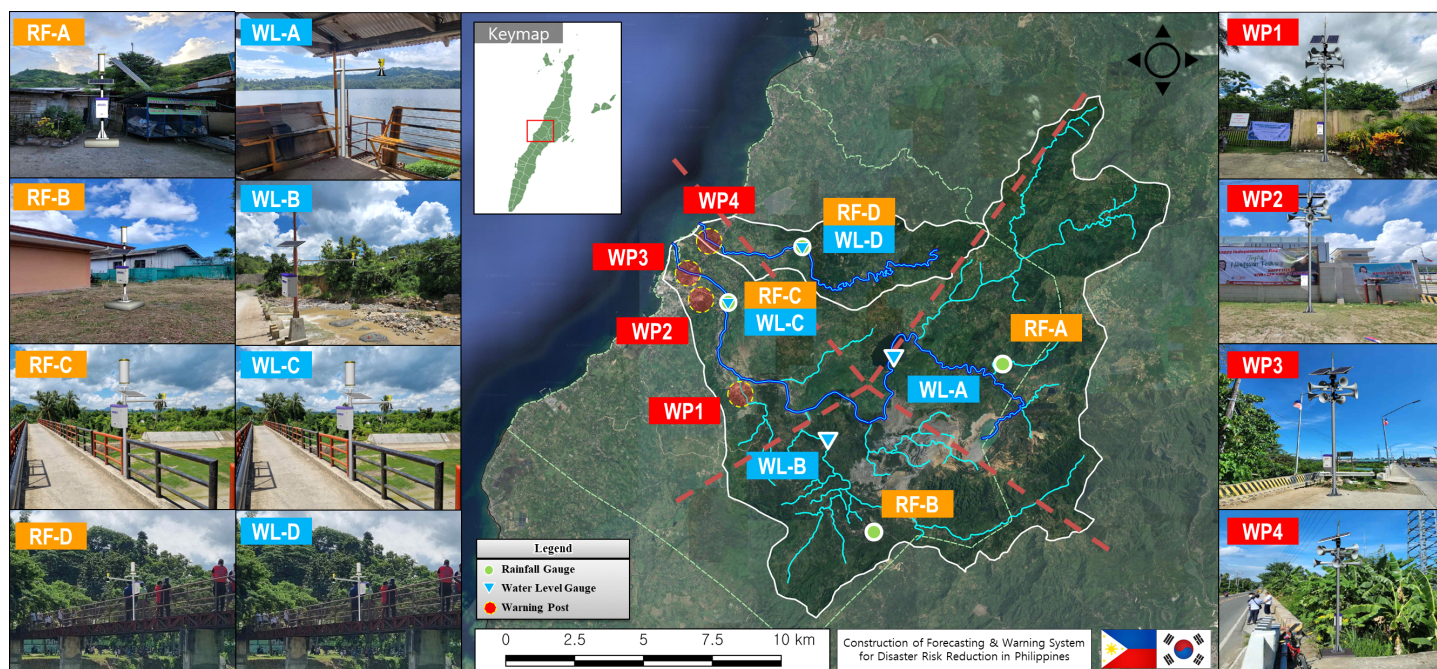


Hinulawan/Maypay River Basin in 2022



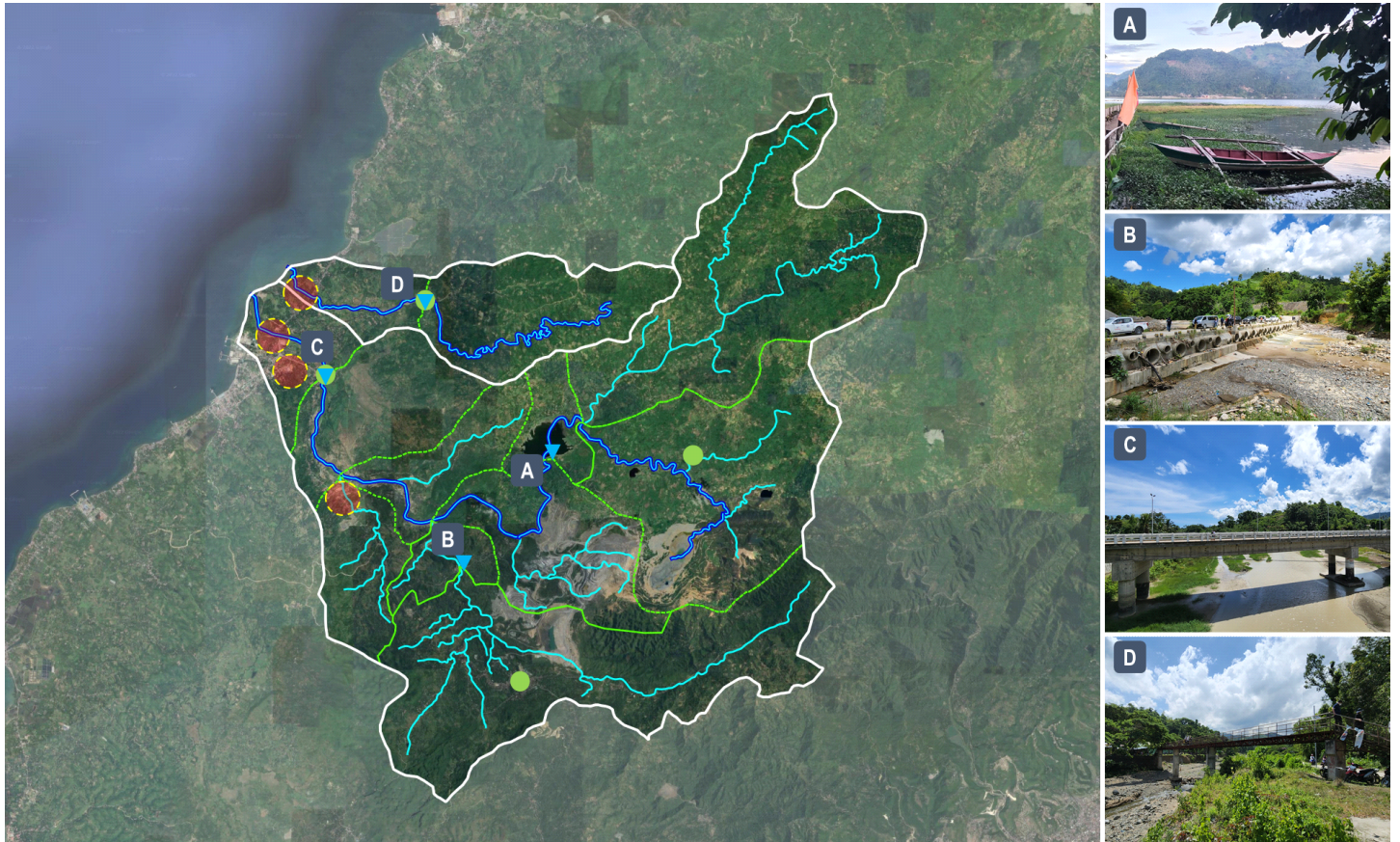
○ Characteristics of Watershed

River	Area (km ²) - A	Length (km) - L	Width (km) - A/L	Shape factor - A/L ²
Hinulawan	163.0	27.4	5.95	0.22
Maypay	21.0	15.5	1.35	0.09

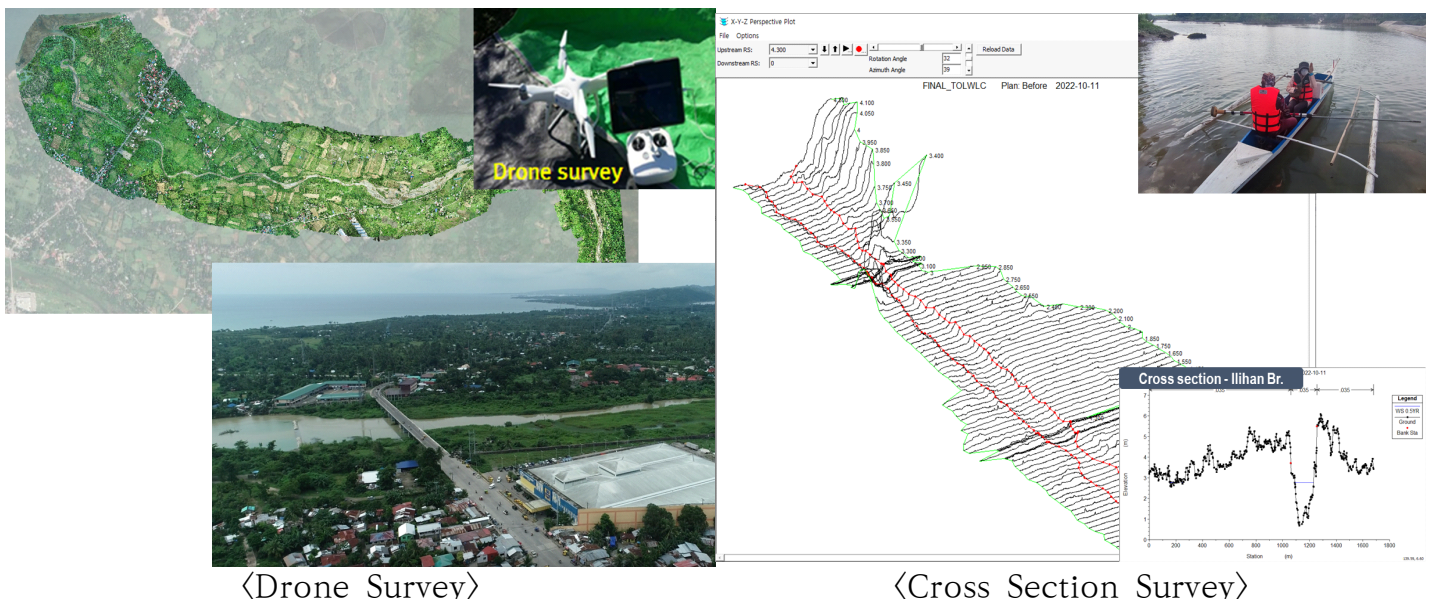
○ Location of Equipment

Basin	Division	Qty	Location	Latitude	longitude
Hinulawan River	Warning Post	3	Magdugo Barangay Hall	10.352N	123.666E
			Toledo Sports Center	10.384N	123.652E
			Sangi Bridge	10.391N	123.650E
	Rainfall Gauge	3	Bagakay Barangay Hall	10.362N	123.750E
			Carmen Copper Corporation	10.311N	123.709E
			Ilihan Bridge	10.381N	123.661E
	Water Level Gauge	3	Malubog Dam	10.362N	123.714E
			Media Onse Bridge	10.336N	123.694E
			Ilihan Bridge	10.381N	123.661E
Maypay river	Warning Post	1	Camanchilles Bridge	10.401N	123.658E
	Rainfall Gauge	1	Capt. Claudio Bridge	10.400N	123.685E
	Water Level Gauge	1	Capt. Claudio Bridge	10.400N	123.685E

○ Characteristics of Sub Basins



○ River Survey

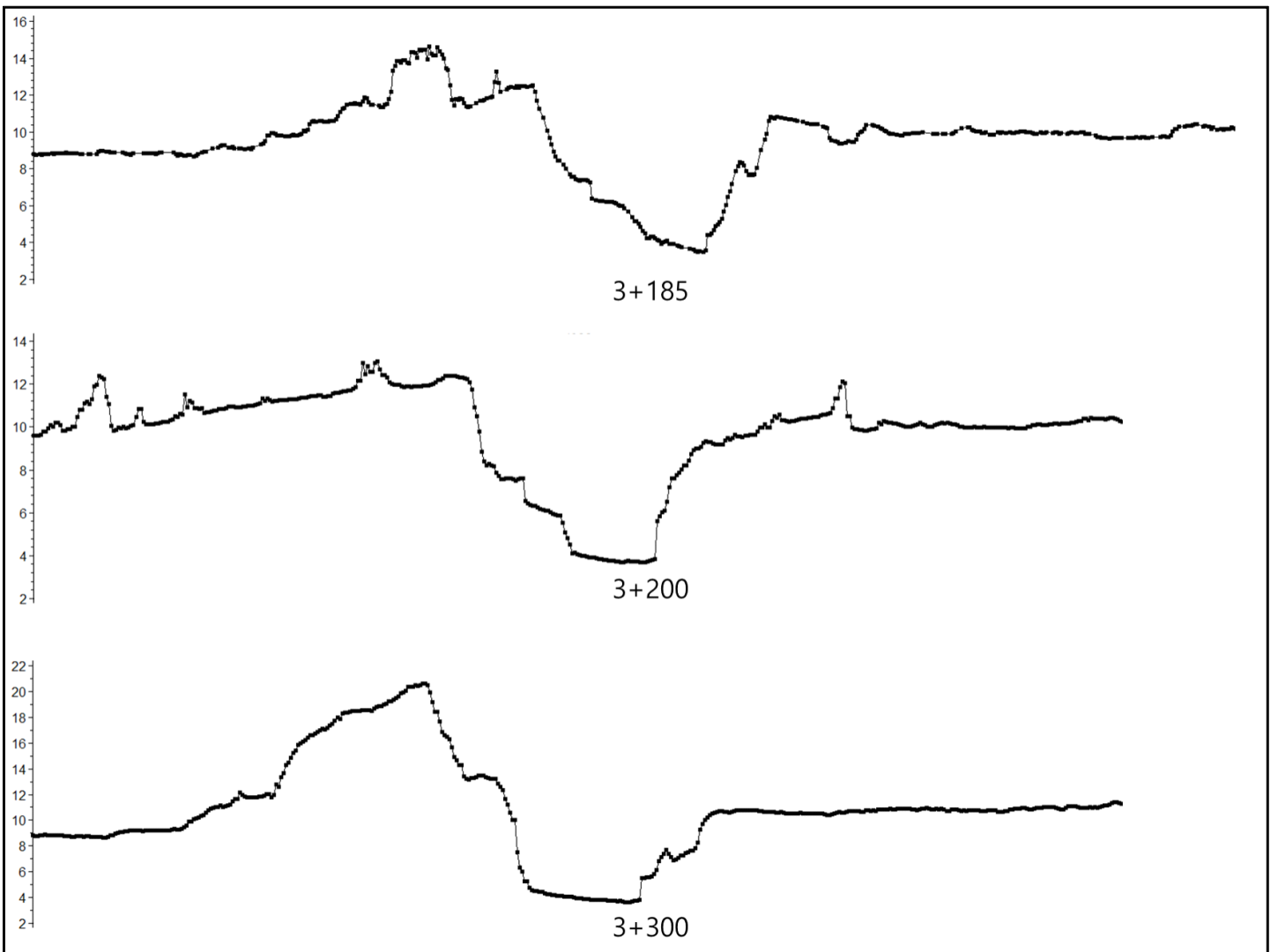
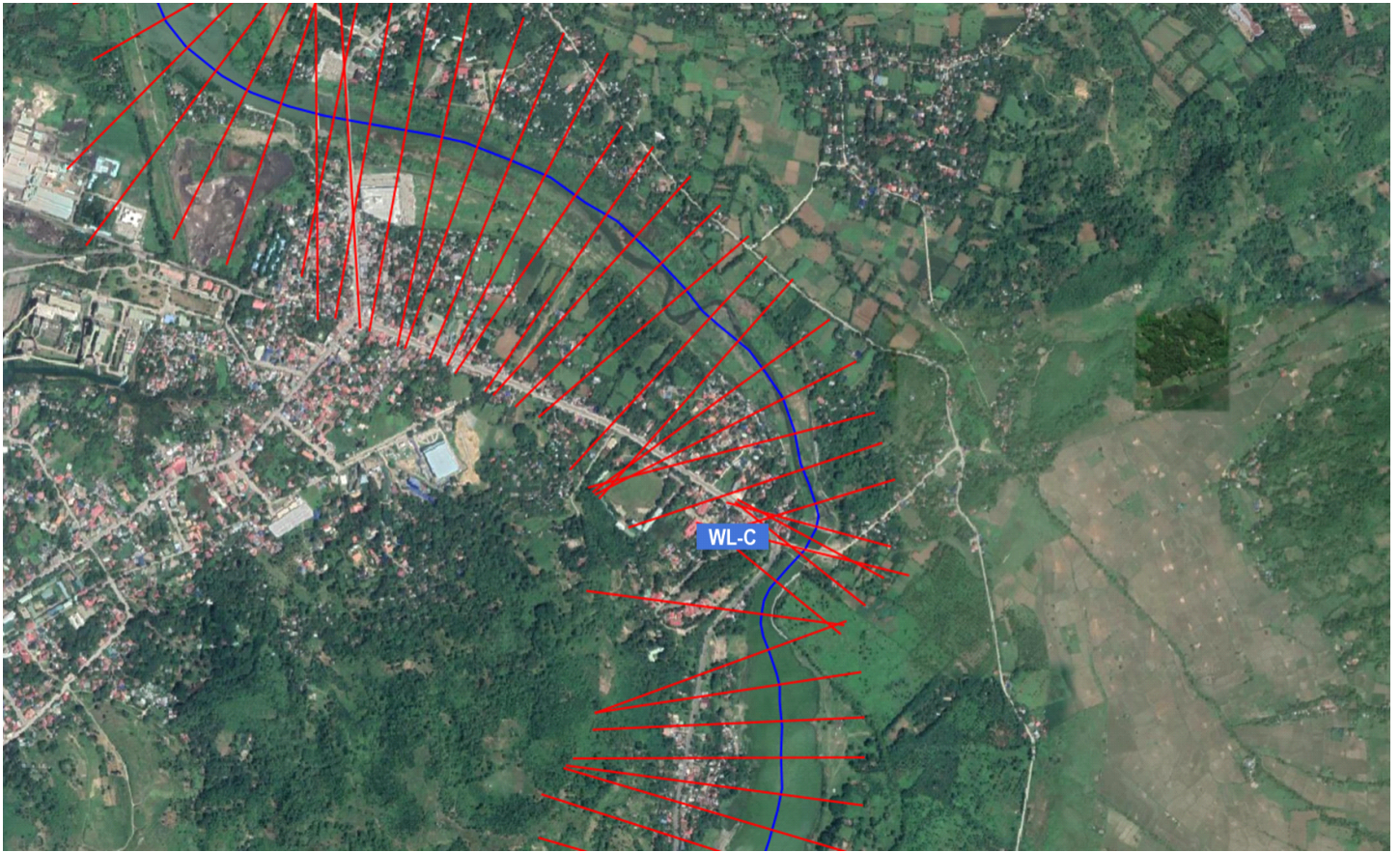


〈Drone Survey〉

〈Cross Section Survey〉

- Drone survey was performed to get the D.E.M(more than 4.0km²) of Dumanjug municipal
- Cross section survey was performed to get the cross sections(316 sections) in the sector of 4 WL station of Putaw river. (Total 14.75km)

► Cross section (WL-C Section, Hinulawan River)



► Cross section (WL-D Section, Maypay River)

